

0	1	2	3	4	5	6	7	8	9
---	---	---	---	---	---	---	---	---	---

		P1-0	P1-1	P1-TIP	P2-0	P2-1	P2-TIP	P3-0	P3-1	P3-TIP		
WERKSCHAKELAAR	0	*			*			*			3STANDEN 3 DEKS SCHAKELAAR STAND TIP TERUGVEREND	66S1.2
	1		*			*			*			76S1.2
	TIP			*			*			*		86S1.2

		P1-0	P1-1	P1-TIP	P2-0	P2-1	P2-TIP		
WERKSCHAKELAAR	0	*			*			3STANDEN 2 DEKS SCHAKELAAR STAND TIP TERUGVEREND	90S5.2
	1		*			*			95S5.2
	TIP			*			*		100S5.2

		P1-H	P1-0	P1-A	P2-H	P2-0	P2-A	P3-H	P3-0	P3-A		
KEUZESCHAKELAAR HAND 0 AUTOM.	H	*			*			*			3STANDEN 3 DEKS SCHAKELAAR STAND HAND	66S1.1
	0		*			*			*			76S1.1
	A			*			*			*		86S1.1

		P1-H	P1-0	P1-A	P2-H	P2-0	P2-A		
KEUZESCHAKELAAR HAND 0 AUTOM.	H	*			*			3STANDEN 3 DEKS SCHAKELAAR STAND HAND	90S5.1
	0		*			*			95S5.1
	A			*			*		100S5.1

Henk van Tongeren Installatietechniek

BLOEMHEUVELLAAN 21
7322 JA APELDOORN
tel. 055-3661533
fax 055-3670693

PROJEKTNAAM : RIJDLGEMAAL GIETELD
PROJECTNUMMER : 9901042
OPDRACHTGEVER : WATERSCHAP
VELUWE

Vervaardigd op : 04.10.1999

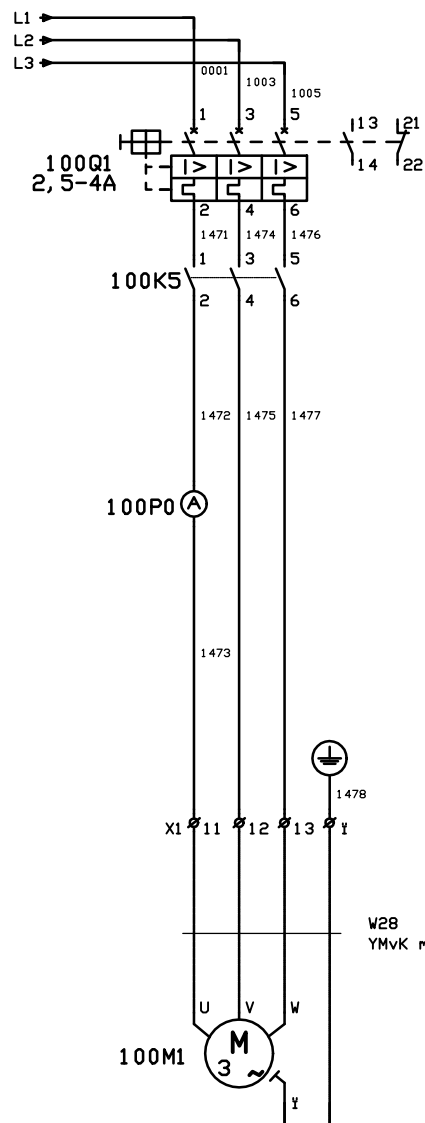
Laatste wijziging : 21.05.2010

door : JWB

Hoogste paginanummer : 405

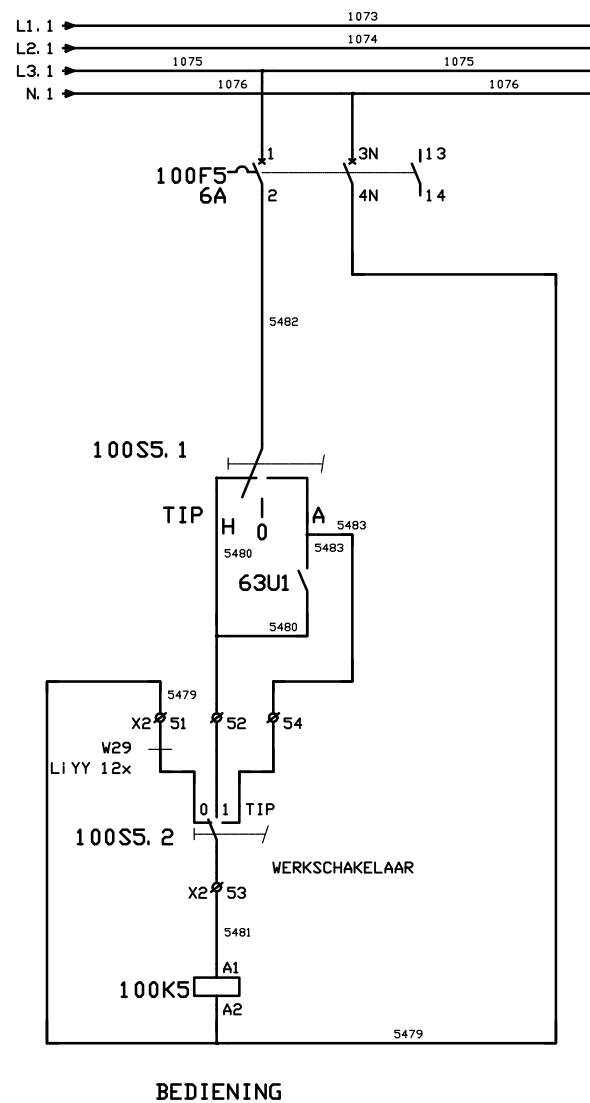
Aantal pagina's : 82



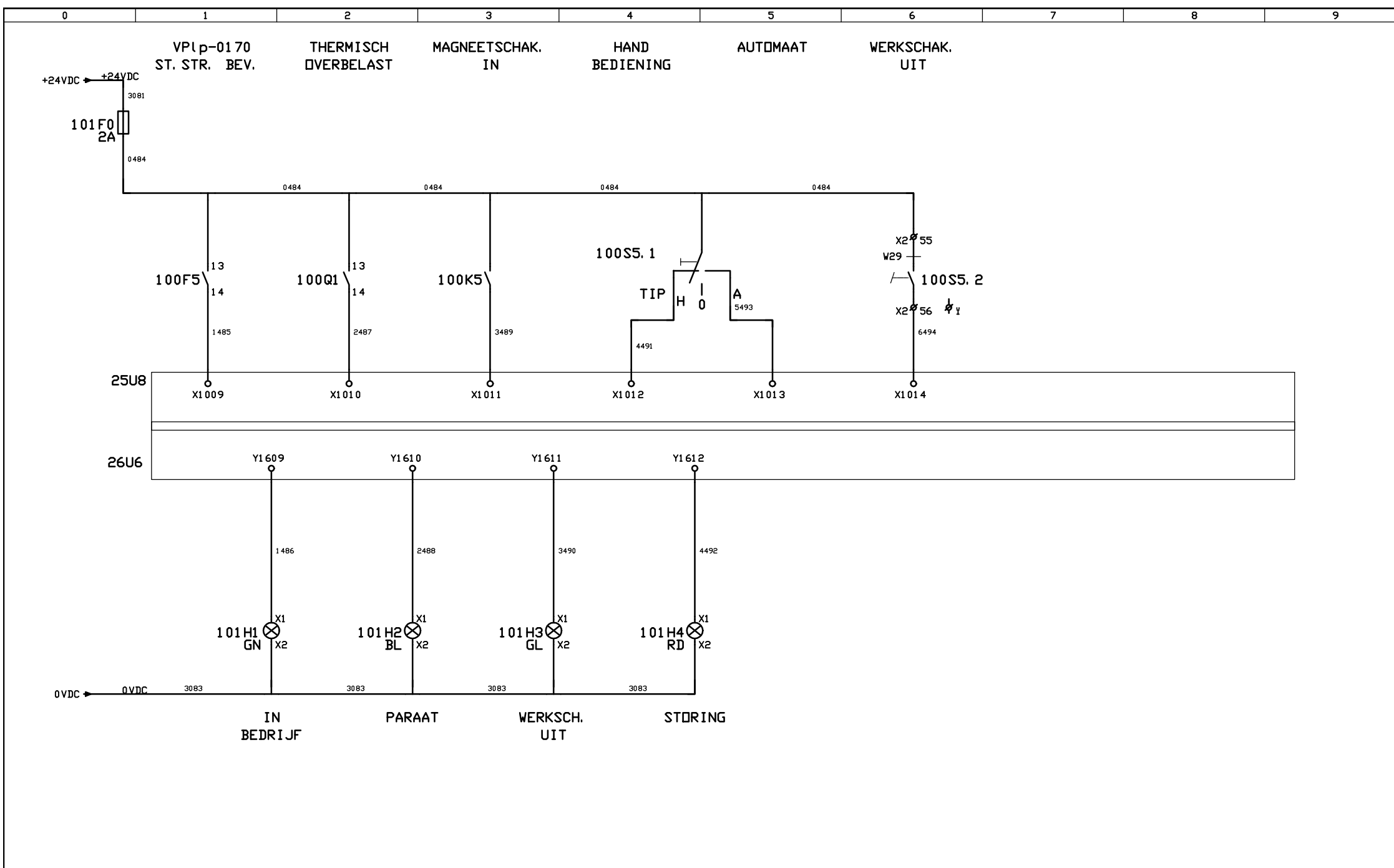


VP1 p-0170

U = 400A
P = 1,1kW
I = 3,4A



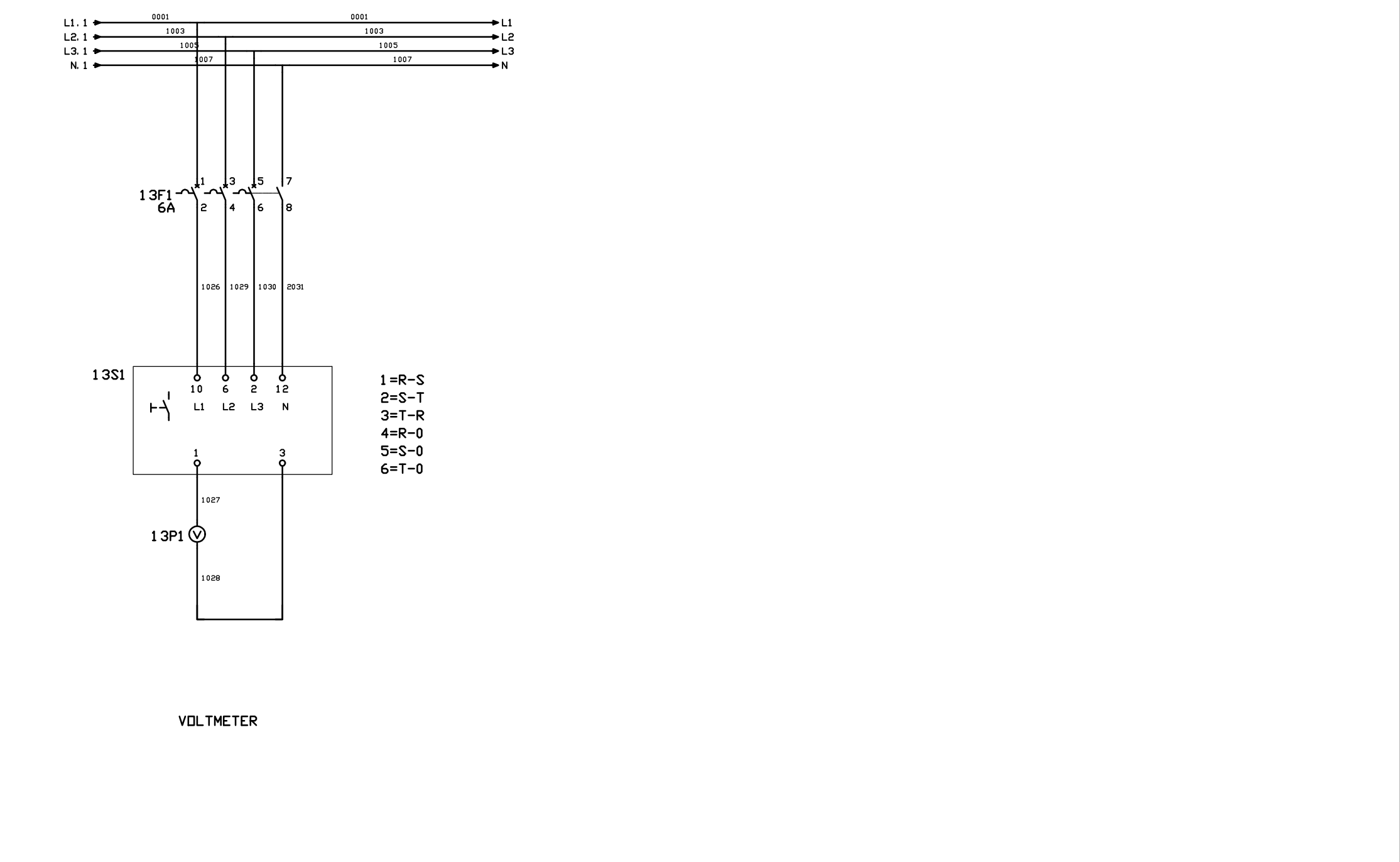
	M	V
101.3		
100.1		
100.1		
100.1		

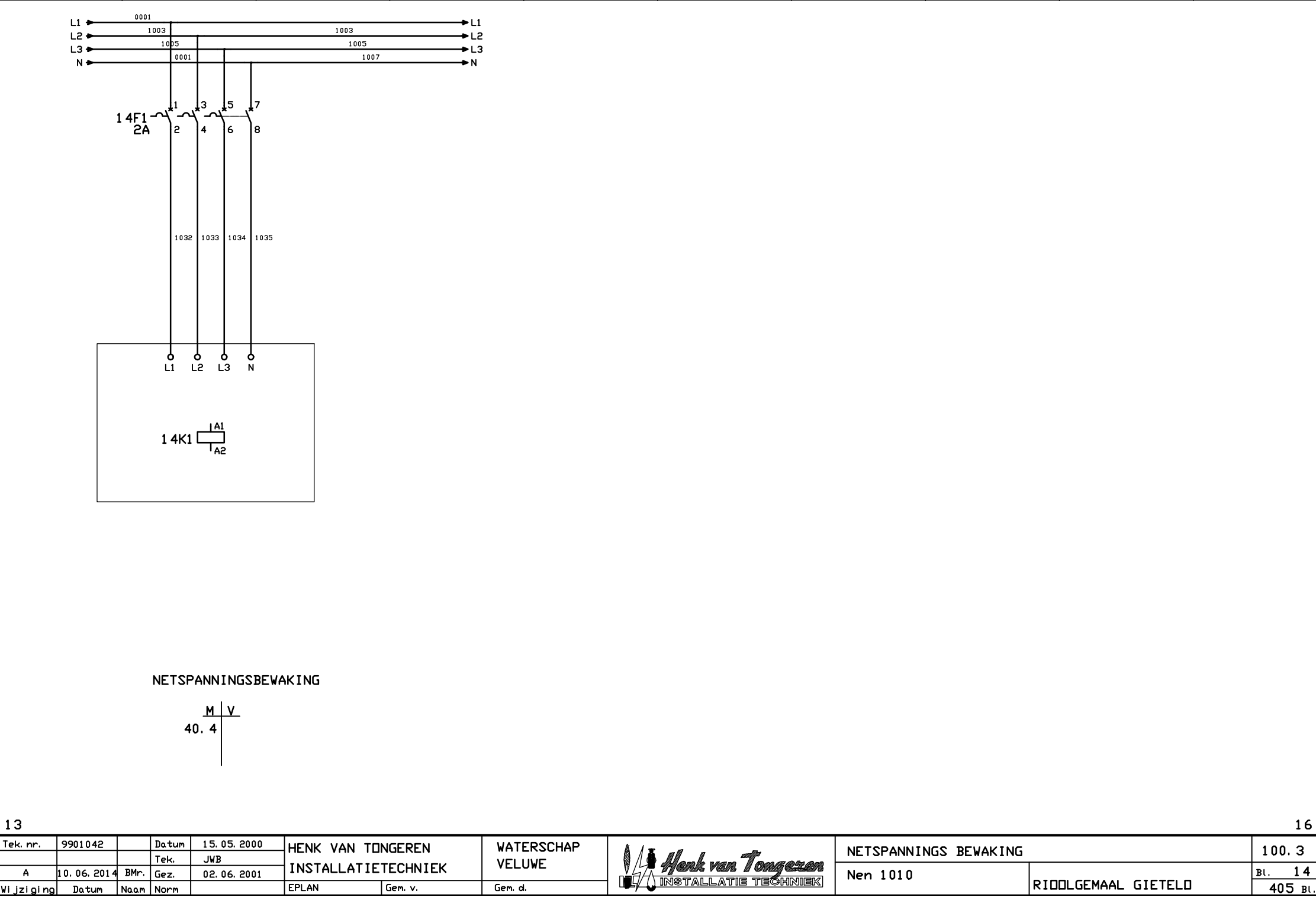


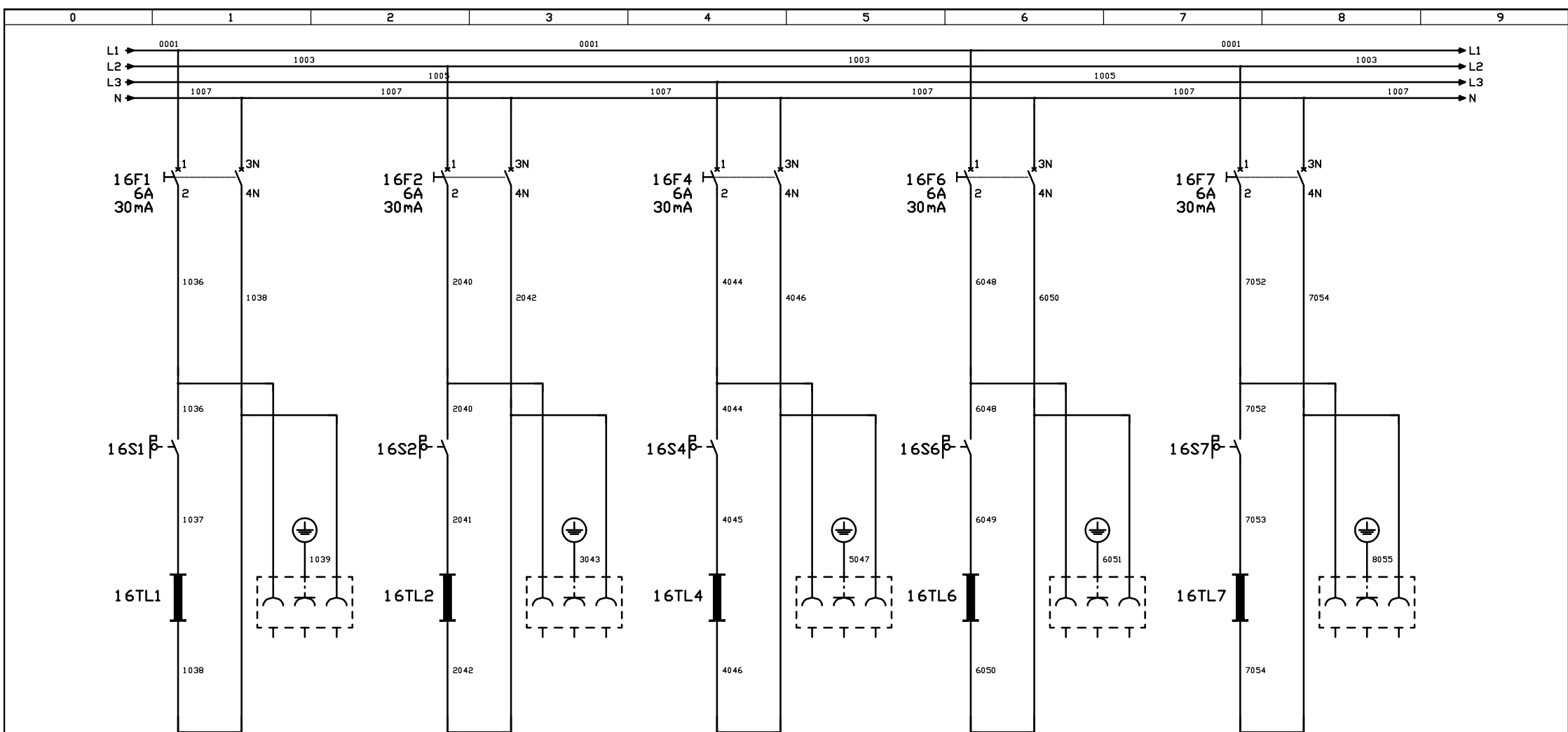
--	--	--	--	--	--	--	--	--	--



OVERSPANNINGS BEVEILIGING







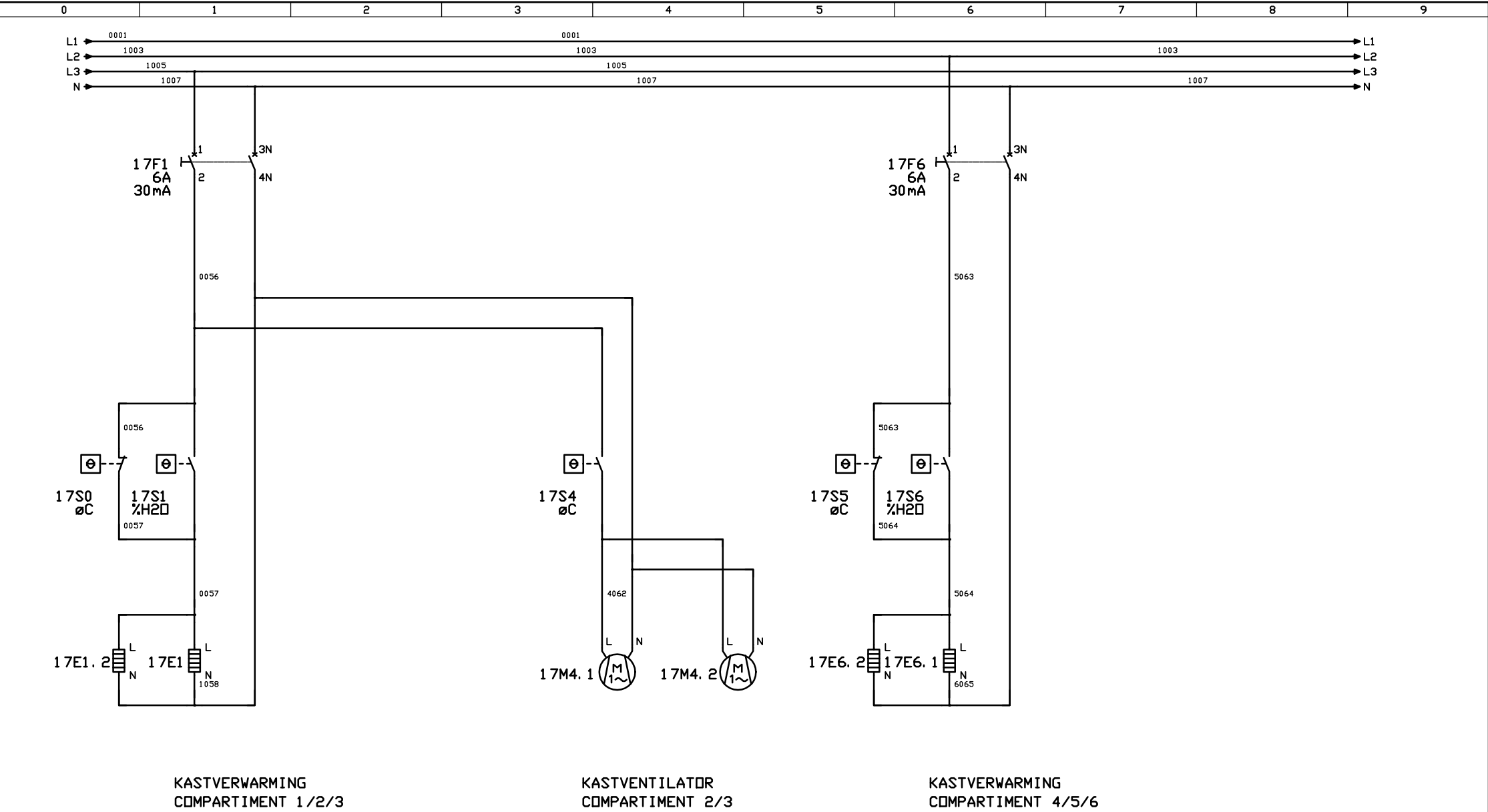
KASTVERLICHTING
COMPARTIMENT 1

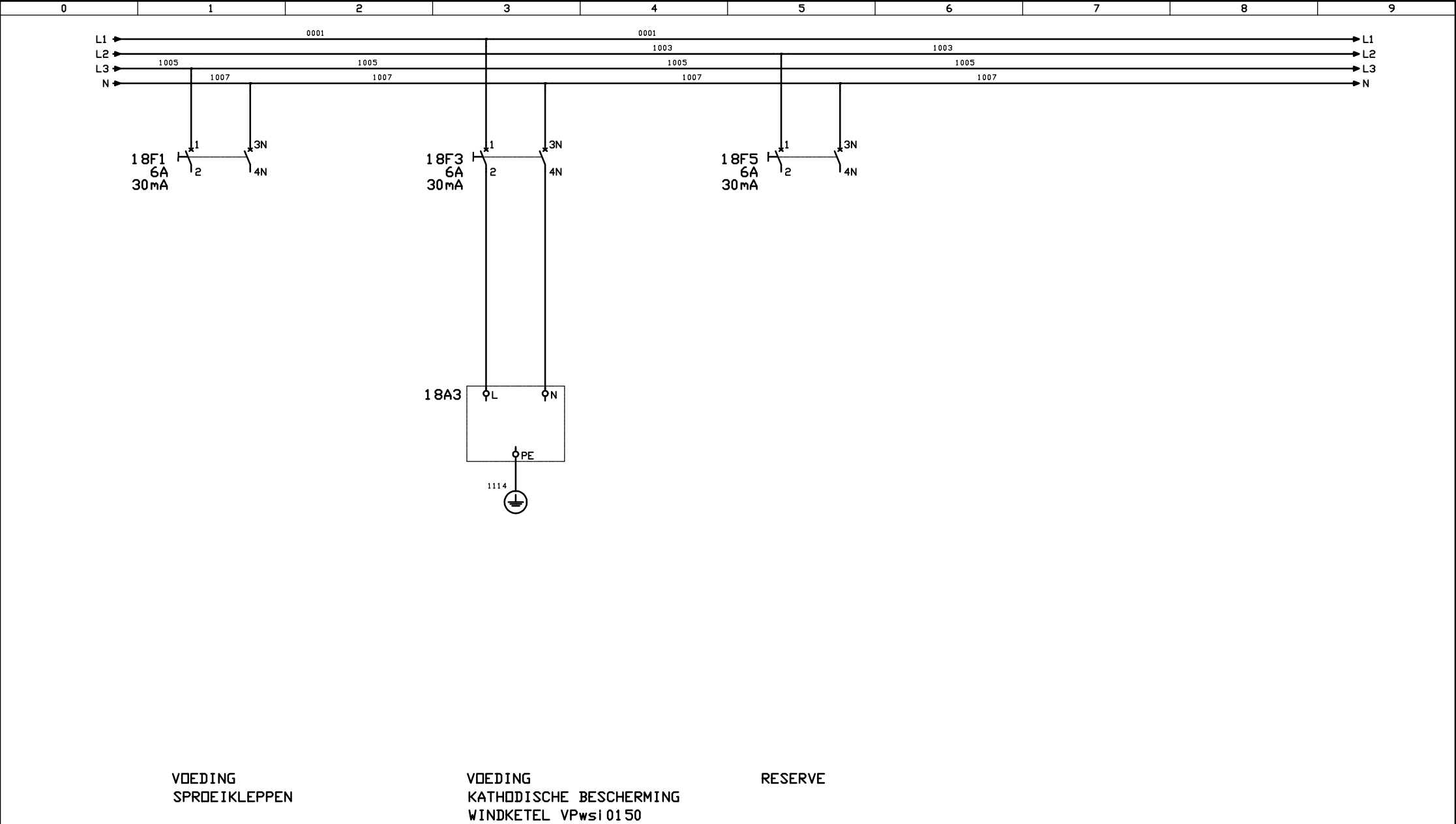
KASTVERLICHTING
COMPARTIMENT 2

KASTVERLICHTING
COMPARTIMENT 3

KASTVERLICHTING
COMPARTIMENT 4

KASTVERLICHTING
COMPARTIMENT 5/6





2a

